



Welcome to the Southeast RPO Annual Fall Meeting

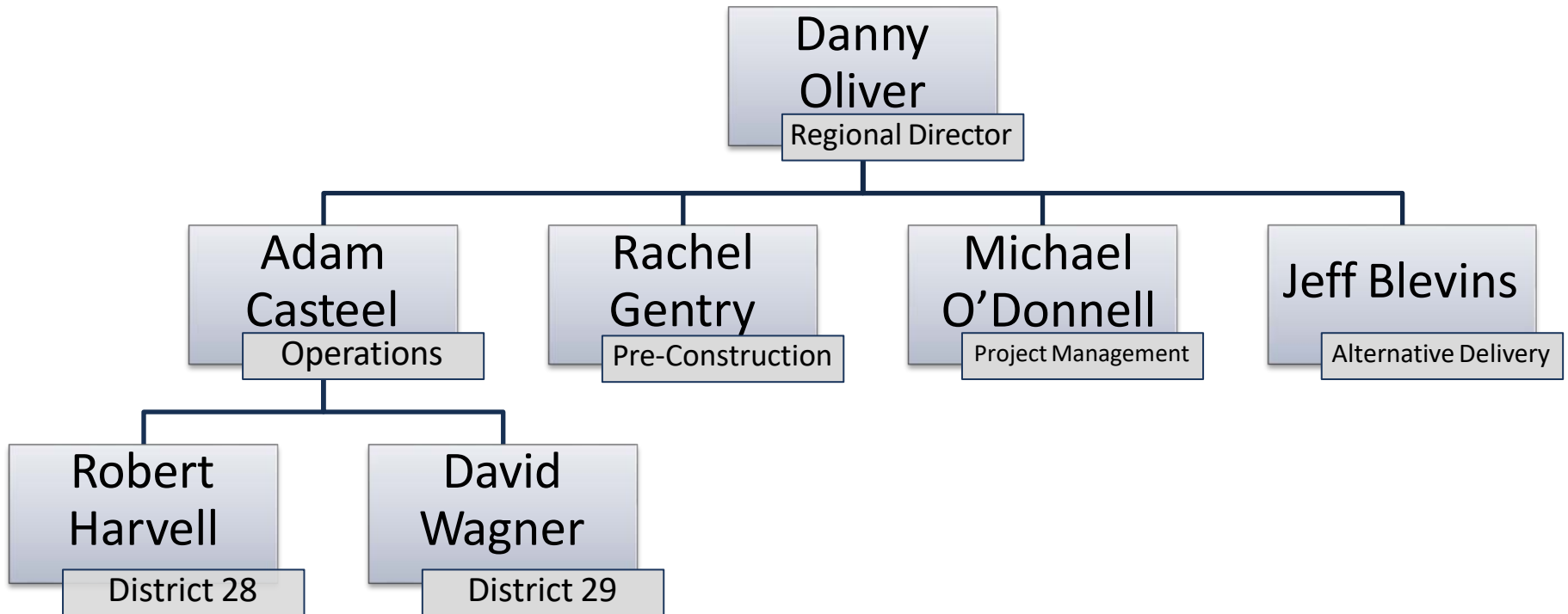
2023



Project Updates and Coordination

TDOT Staff

TDOT-Region 2 Organization Chart



Project Updates – Resurfacing

County	PIN	Route	Description	Length	Treatment
Bledsoe	131772.00	285	From the Van Buren County Line to SR-101	3.15	Chip Seal & TLD
Bledsoe	131774.00	301	From SR-285 to south of CC Road	0.9	Chip Seal & TLD
Bradley	129629.00	2	From Hamilton County Line to near Boss Road	6.2	Micro-surfacing @ 32 lbs/sy
Bradley	131319.00	74	From north of Inman Street to north of SR-60	1.59	Mill & 411D
Marion	131778.00	108	From SR-28 to Grundy County Line	11.01	Micro-surfacing @ 22 lbs/sy
McMinn	127240.00	163	From I-75 to near SR-2	2.43	Mill & 411D
McMinn	133968.00	309	From SR-2 to Near I-75	2.25	Mill & 411D
Meigs	131779.00	68	From Rhea County Line to McMinn County Line	7.52	Mill & 411D
Meigs	123691.00		Old SR-30 (W Memorial Dr/E Memorial Dr), From Old SR-30 (LM 0.00) to SR-30 (LM 0.95)	0.95	411TLD Overlay at 85 lbs/sy
Meigs	133971.00	60	From south of Anderson Acres Drive to north of Horner Hollow Road	2.1	Mill & 411D
Rhea	131781.00	29	From south of Boofer Lane to south of Metzger Lane	5.24	Mill & 411D

Project Updates – Safety

County	PIN	Route	Description	Letting	Scope
Bledsoe	131950.00	28	From Near Pikeville City Limits to Near Rocky Branch	Dec '23	Striping, Signing, Guardrail
Bradley	125526.19	2	Intersection at 17th Street Northwest, LM 9.93 in Cleveland	FY25	Traffic Signal Cabinet and Pedestrian Upgrade Project
Bradley	129430.00	60	From Near Vista Street to Near Guthrie Street Northwest in Cleveland	FY25	Median Modifications
Bradley	131371.00	40	(US-64/74), Intersection at Minnis Road Northeast	FY24	Signal Modification and Detection Devices
Grundy	129114.00	56	From Baker Street to Des Church Road	FY25	Striping, Signing
Marion	131309.00	28	Intersection at Moss Loop Road in Jasper	FY24	Left Turn Lane
Marion	133912.00	27	From Near Bryant Road to Near Ladd Lane	TBD	Underway
McMinn	125526.20	30	Intersection at 8th Street, LM 20.96 in Etowah	FY25	Traffic Signal Controller, Cabinet, and Pedestrian Upgrade Project
Sequatchie	132359.00	111	From Lewis Chapel Road to East Valley Road	Dec '23	Striping, Signing, Delineators

Project Updates – 3-Year Plan

Bledsoe/Sequatchie SR-28 (US-127), PIN 124104.05

From South of Humble Cemetery Road to 5-Lane in Pikeville
Right of Way acquisition will begin in FY25

Grundy SR-50 (Pelham Rd), PIN 124782.00

From LM 8.0, 7.5 miles East of I-24 (Exit 127), to LM 11.0 (IA)
Right of Way acquisition will begin in FY26

Rhea SR-30 (Old Washington Hwy), PIN 109410.03

From Near SR-29 (US-27) to West of New Union Rd. / White Oak Rd.(IA)
Right of Way acquisition will begin in FY25

Polk SR-40 (US 64/Corridor K), PIN 102420.13-.16

Location 3, Welcome Valley & Cloud Branch Bridge

Location 4, SR-314 (Parksville Rd) Intersection

Location 7, Geometric Improvement at Lake Ocoee Inn & Marina

Location 9, Oswald Rd Intersection

TMA- Project Updates – Southeast

PIN	County	Route	Description	Length	Phase	Est.	Notes	Proposed FY 2024-2026 Comprehensive Multimodal Program
109410.03	Rhea	SR-30	(Old Washington Hwy.) From Near SR-29 (US-27) to West of New Union Rd. / White Oak Rd.(IA)	3.3	ROW	3.3		ROW FY 25
124104.05	Bledsoe - Sequatchie	SR-28 US-127	From South of Humble Cemetery Road to 5-Lane in Pikeville (IA)	3.2	ROW	2.8	Archeological sites on corridor could delay environmental document which could delay ROW funding.	ROW FY 25
132290.00	Bradley	I-75	ITS Infrastructure from near SR-312 in Bradley County to near Coile Road (CR-114) in McMinn County	28.6	PE/CN		ITS Project	
109410.04	Rhea	SR-30	(Old Washington Hwy.) From Near Sky Dr. to West of the Tennessee River Bridge (IA)	4.4	ROW	3.3		
124086.00	Marion	SR-2 US-64	From Near Hillcrest Lane in Kimball to near Magnolia Ave. in Jasper (IA)	3.2	ROW	18.0		
124104.01	Sequatchie	SR-28 US-127	From 5-Lane North of Dunlap to South of Brea Road (IA)	3.8	ROW	4.6		
124104.02	Bledsoe	SR-28 US-127	From South of Brea Road to South of Mariah Farm Lane (IA)	3.4	ROW	4.5		
124104.03	Bledsoe	SR-28 US-127	From South of Mariah Farm Lane to North of Herman Smith Road (IA)	3.5	ROW	3.2		
124104.04	Bledsoe	SR-28 US-127	From North of Herman Smith Road to South of Humble Cemetery Road (IA)	3.3	ROW	3.3		
124782.00	Grundy	SR-50	(Pelham Rd.) From LM 8.0, 7.5 miles East of I-24 (Exit 127), to LM 11.0 (IA)	3.0	ROW	1.0		ROW FY 26
102420.08	Polk	SR-40 US-64	From West of Ocoee River to SR-68 in Ducktown (IA)	23.3	ROW	15.0		
124785.00	Marion	SR-156	From East of Patton School Road to West of First Street (Approx 1 Mile West of Cedar Ave. in South Pittsburg to Approximately 1.7 Miles West) (IA)	1.7	PE	0.6		

*Denotes projects selected for Proposed FY 2024-2026 Comprehensive Multimodal Program

Transportation Planning Grant 2024

Application Guidelines

When preparing the application, it is important to consider the following questions:

- What is the specific need of this project?
- How will access to local/regional services and facilities be accomplished?
- Are there any safety concerns that need to be addressed?
- How will this affect economic growth, commerce, tourism, and/or revitalization?
- How will this project support the community?
- What type of relevant data/statistics will support this project's need?

The application also needs to include:

- Assigned resolution of support from the applying jurisdiction(s). The resolution(s) shall include an agreement to pay the local match should a grant be awarded.
- Acknowledgement that the completed project/plan will be adopted by resolution.
- Please explain how you plan to implement the planning project's recommendations

Completed application packets must be submitted by 4:30pm CT on
January 19, 2024.

Planning Opportunities Include, and not limited to:

Complete Streets Plan

Pedestrian and Bicycle Master Plan

Transportation System Management & Operations

Corridor Studies

Resurfacing and Striping Plan

Community Mobility Plan

We Welcome Other Transportation Planning Ideas!

Contacts - Office of Community Transportation

TDOT Region 2 Contacts:

Bently Thomas,
Planning Supervisor
Bently.Thomas@tn.gov
(423) 595-5636

Kevin Layne,
Planner
Kevin.Layne@tn.gov
(423) 620-4391

Chanel Hippix,
Planner
Chanel.Hippix@tn.gov
(629) 237-9482

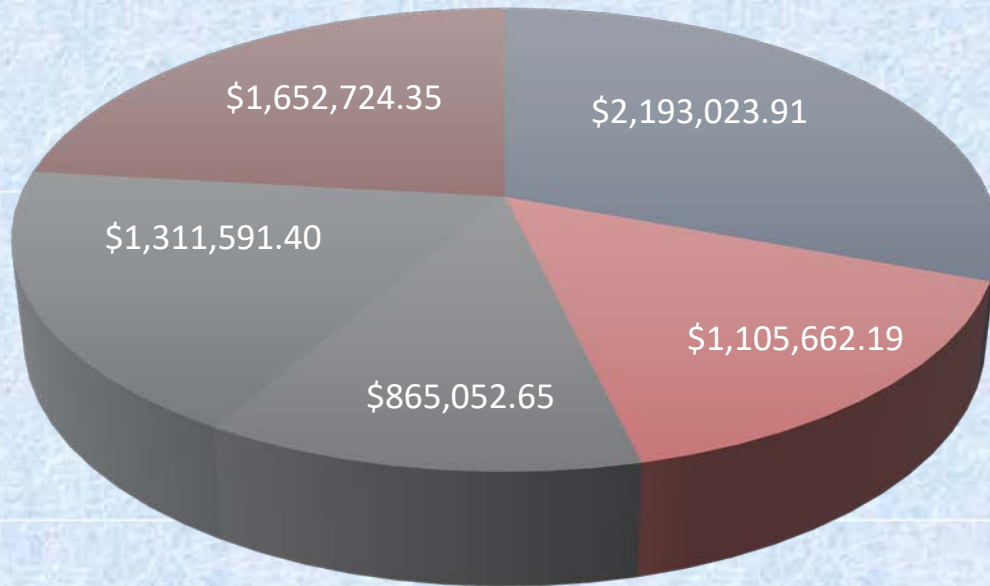
Transportation Modernization Act



Southeast TN RPO

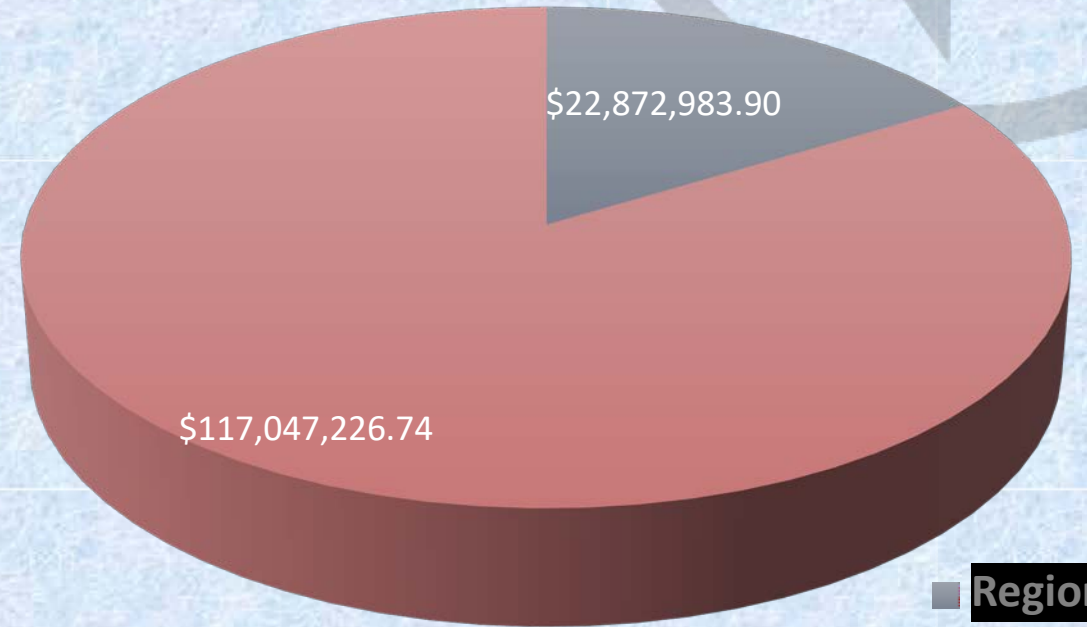
Funding Obligations

County Obligations to Date



■ Marion ■ Meigs ■ Polk ■ Rhea ■ Sequatchie

Total Funding Obligated to Date



■ Region 2
■ Statewide

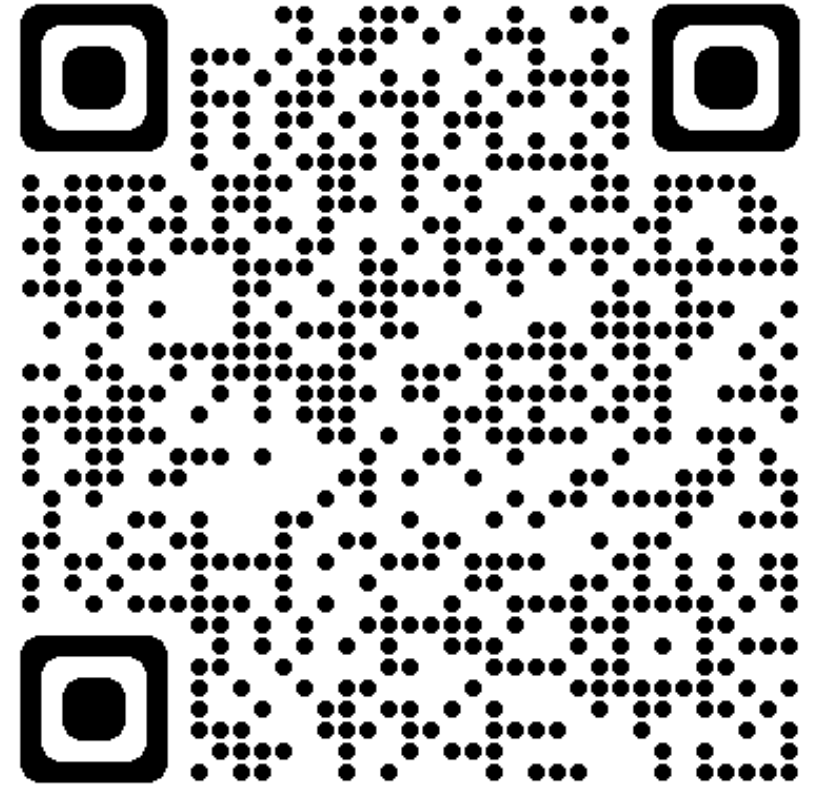
County Resurfacing Miles

Bledsoe	6
Bradley	7.96
Grundy	0
McMinn	48
Marion	13.296
Meigs	13.18
Polk	4.41
Rhea	6.24
Sequatchie	12.49

Total: 111.576

State-Aid Dashboard

[State Aid Dashboard \(arcgis.com\)](https://arcgis.com)



Contact Information

Lisa Dunn
State-Aid Manager
615-253-2684 office
615-519-2963 cell
Lisa.Dunn@tn.gov

Curt Gibbs
Region 2
Transportation Project Specialist
423-510-1283
Curt.Gibbs@tn.gov



THRIVE

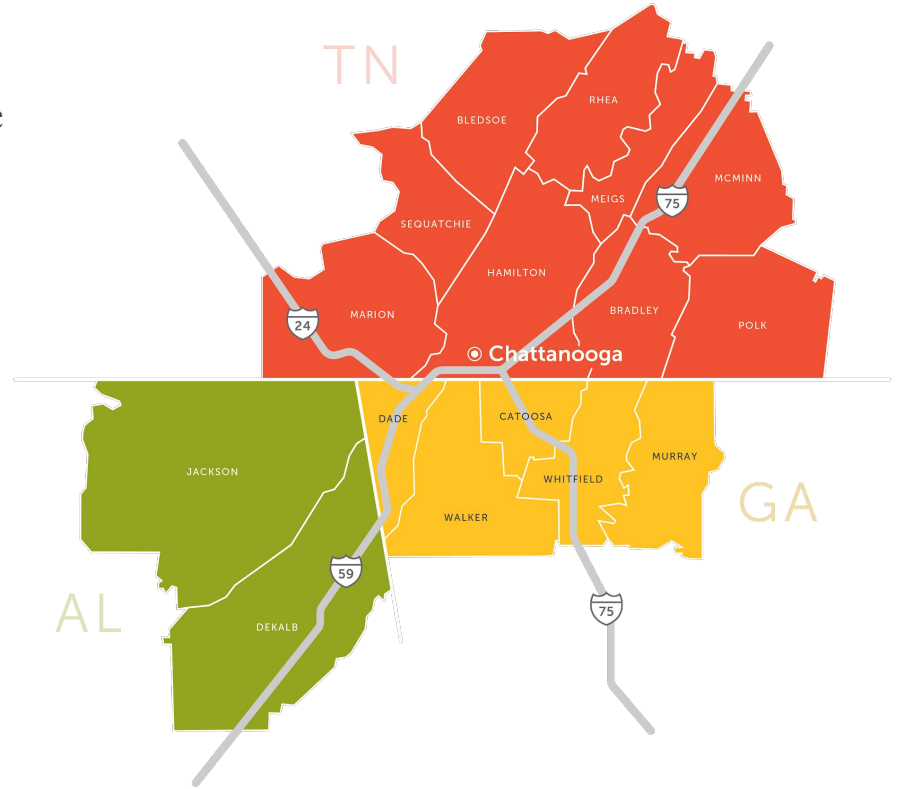
Regional Partnership

Mission

Thrive Regional Partnership inspires responsible growth through **conversation**, **connection**, and **collaboration** in the tri-state Chattanooga region.

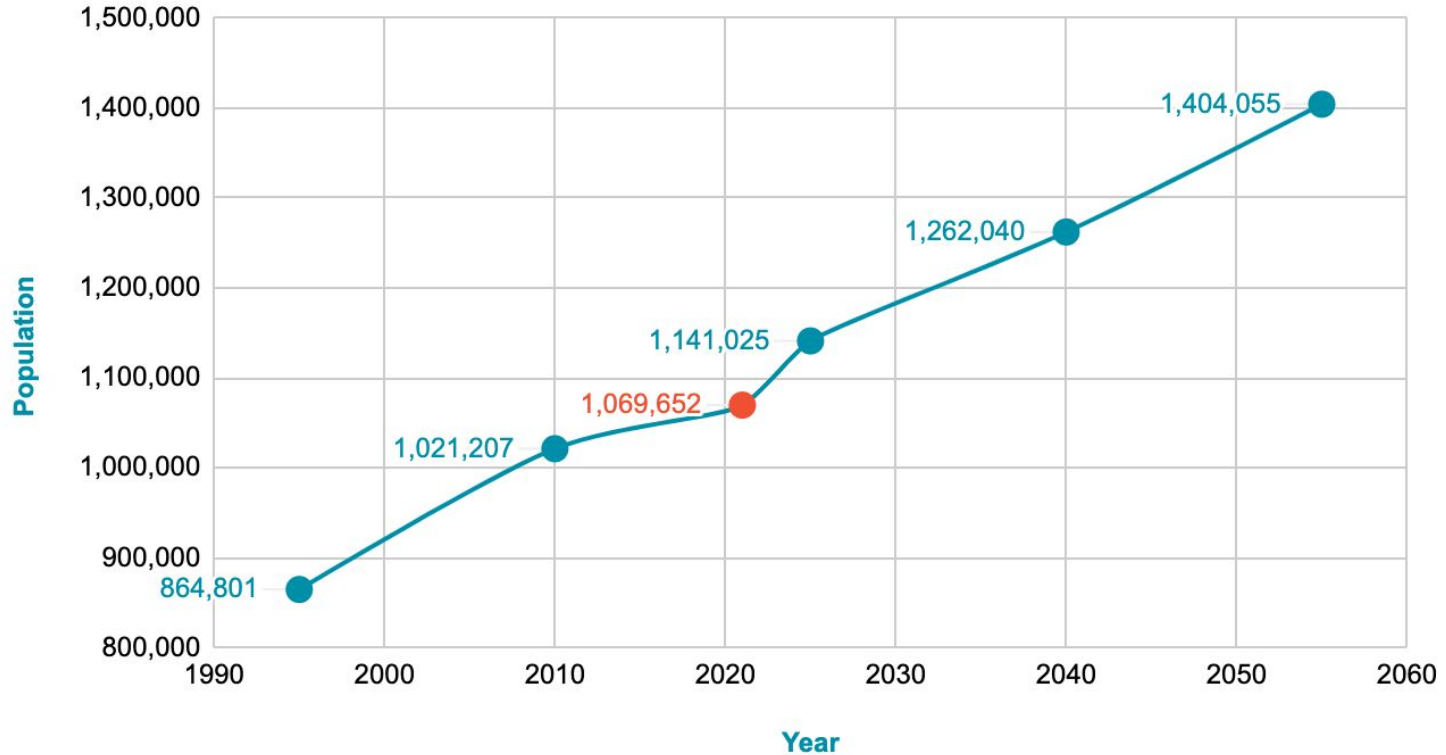
We convene stakeholders across the region to ensure that as we grow in industry, prosperity, and population, we also preserve community and natural character for generations to come.

Our footprint includes **16 counties** across **northeast Alabama**, **northwest Georgia**, and **southeast Tennessee**.



...to ensure that as we grow in industry, prosperity, and population,

Regional Population Growth



...we also preserve community and natural character for generations to come.



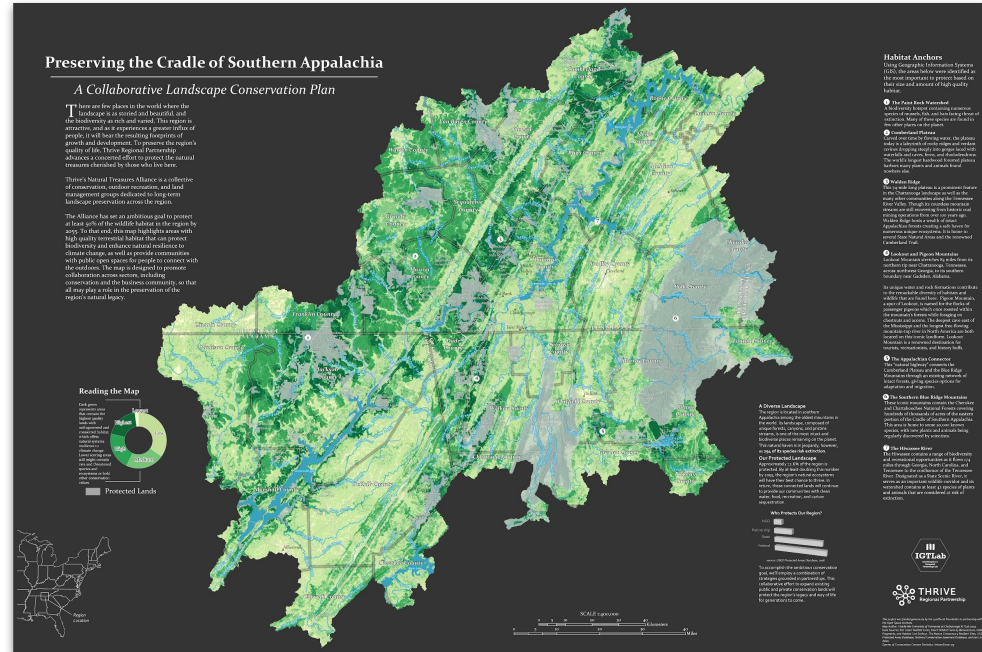
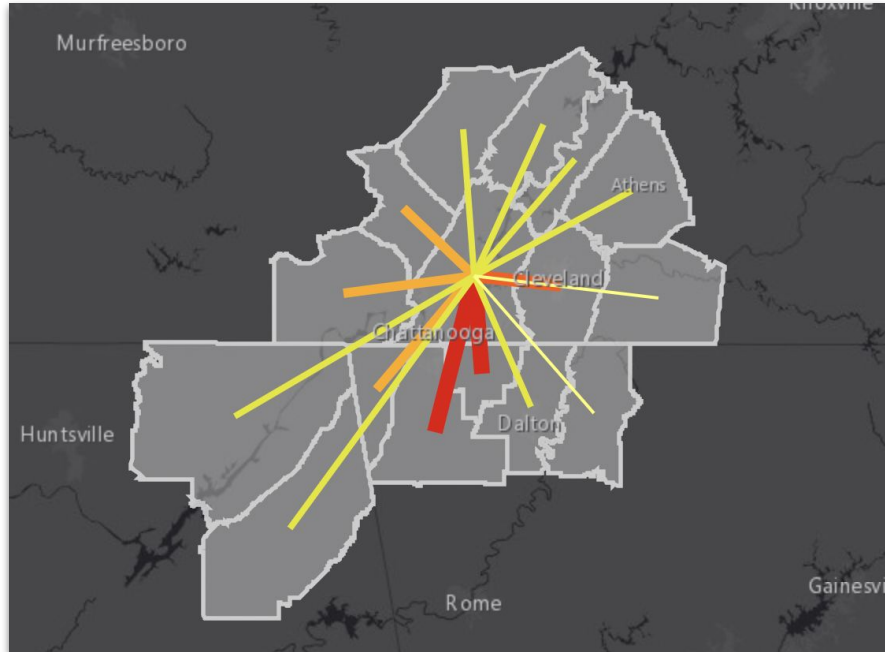
Chattanooga overlooking Moccasin Bend and the Tennessee River, The Dyrt



Star Mountain, Photo: Victoria Stamey

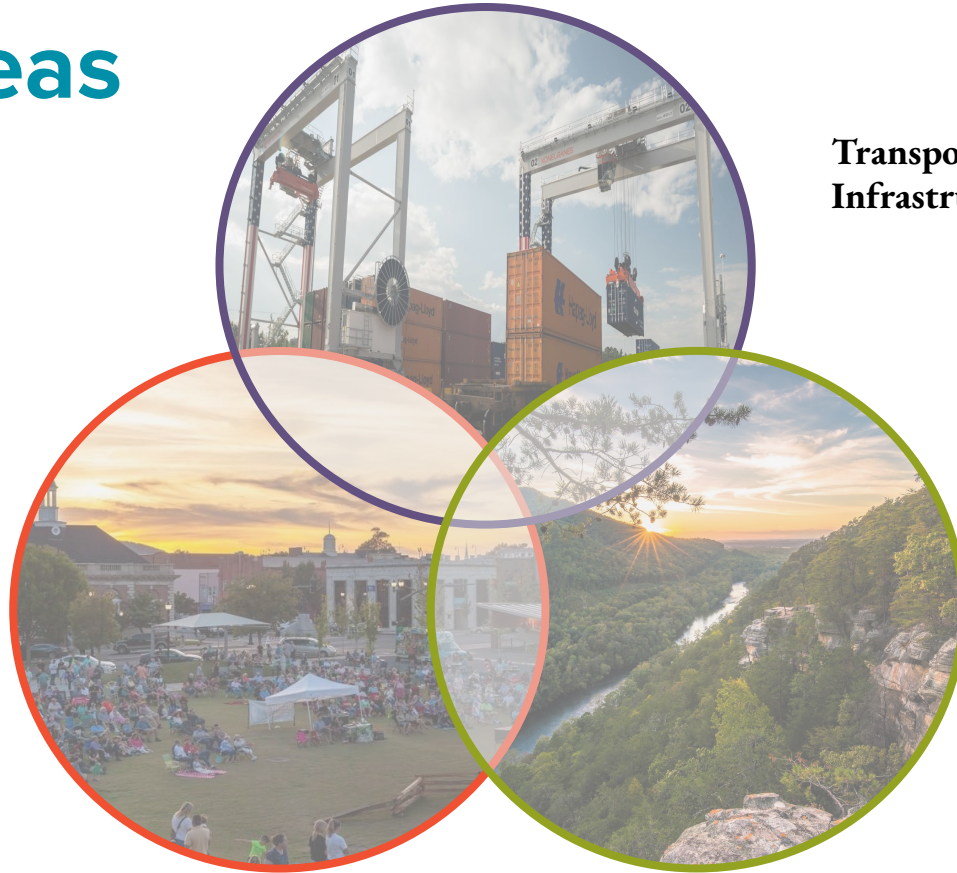


Why think regionally?



Impact Areas

**Transportation +
Infrastructure**



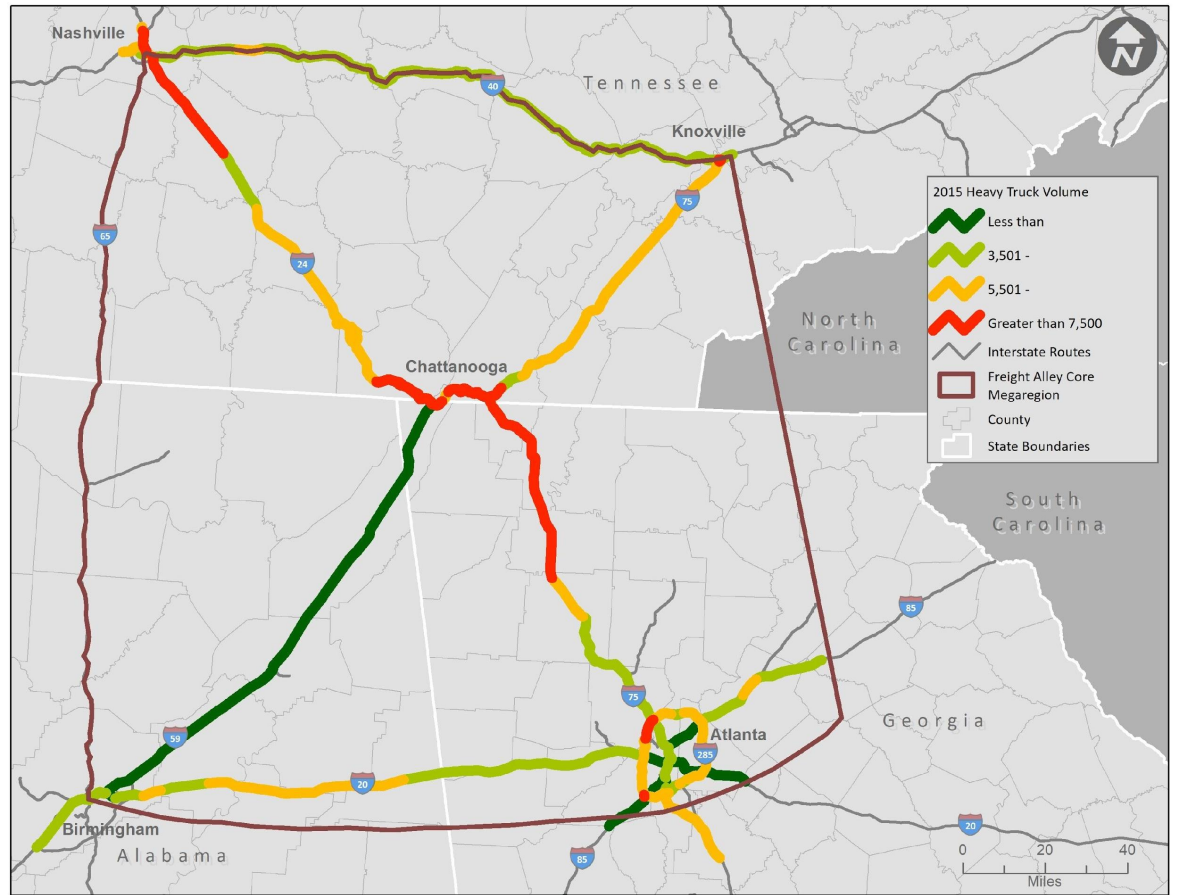
Community Prosperity

Natural Treasures



2015 Heavy Truck Volume Corridors

7,500+ trucks per day

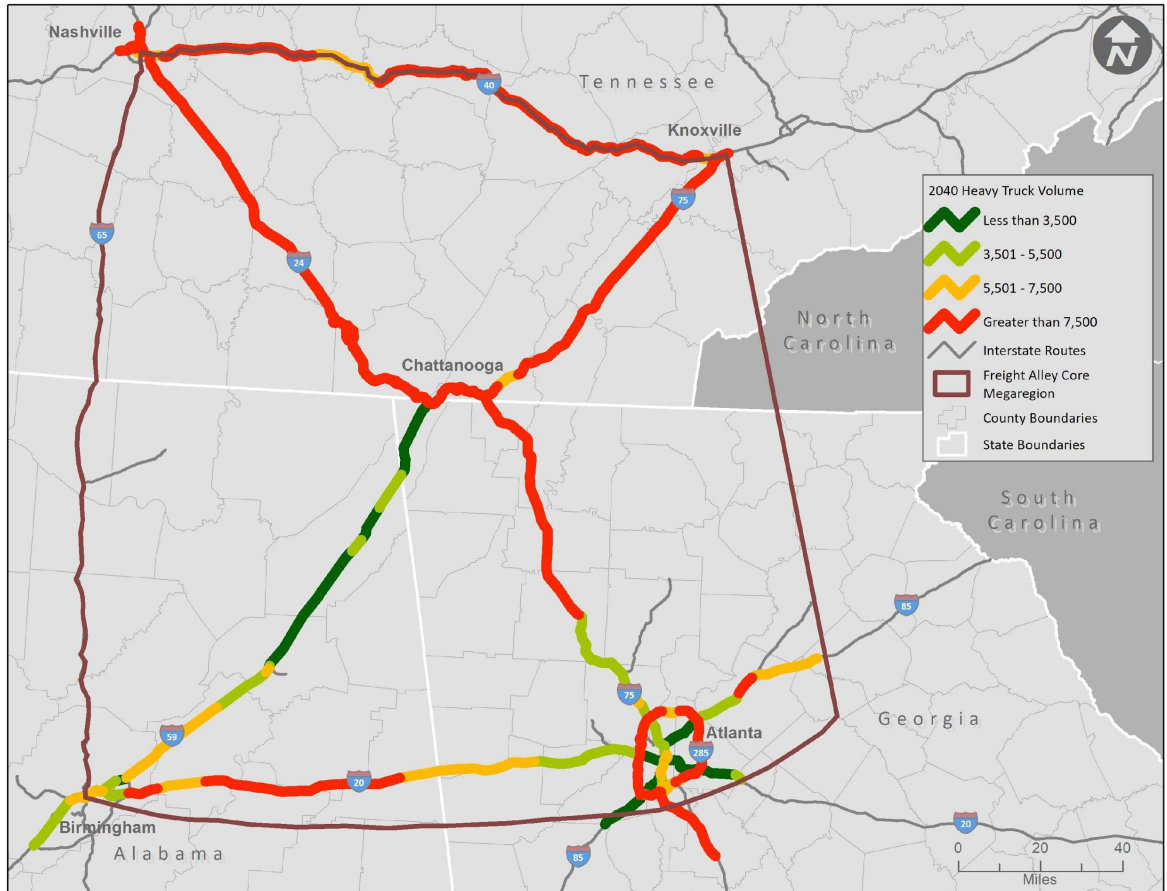


Source: GDOT Travel Demand Model, TDOT Travel Demand Model, Count Data from ALDOT, GDOT, TDOT, CDM Smith analysis, 2020



2040 Heavy Truck Volume Corridors

7,500+ trucks per day



Source: GDOT Travel Demand Model, TDOT Travel Demand Model, Count Data from ALDOT, GDOT, TDOT, CDM Smith analysis, 2020



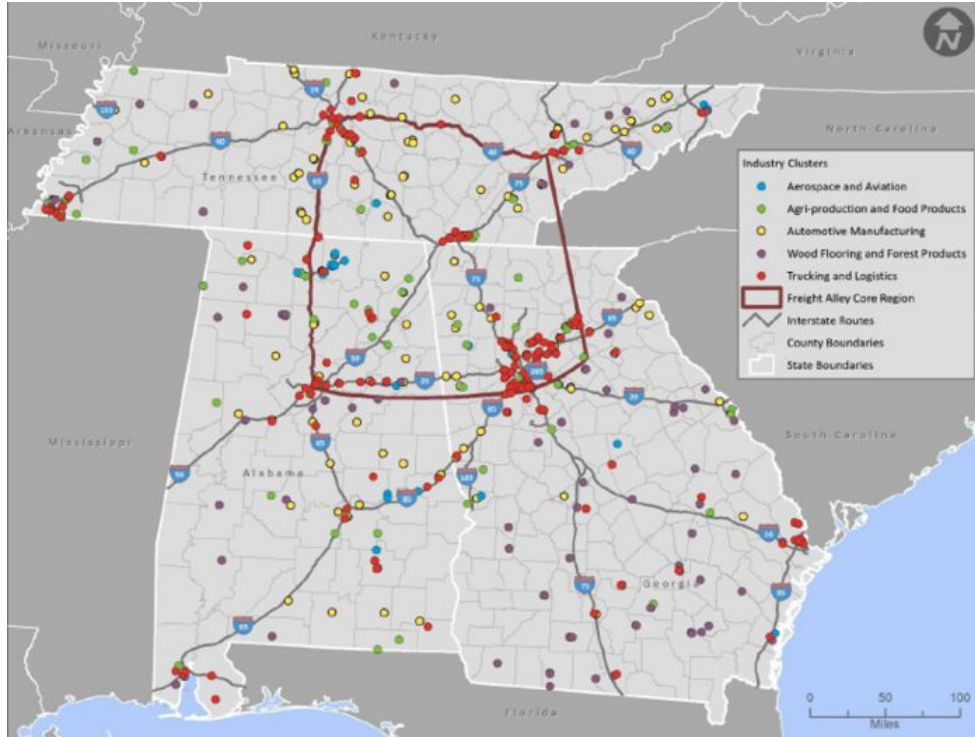
Freight Moves our Economy!

Solely Truck Borne Freight, 2018

Alabama: 65% of total freight tonnage originating or terminating in the state, valued at **\$444 billion**

Georgia: 81% of total freight tonnage originating or terminating in the state, valued at **\$929 billion**

Tennessee: 75% of total freight tonnage originating or terminating in the state, valued at **\$609 billion**.



Source: National Economic Partnerships Final Report, CDM Smith, 2020



The TRIP Platform

Geospatial gateway to transportation and freight data, maps, and resources for greater Chattanooga

- Find data
- View and interact with maps
- Learn about freight movement in the region



Moving Freight Alley Forward

5.9 million

Shipping container units passed through the Port of Savannah in 2022, setting new record cargo volumes

80%

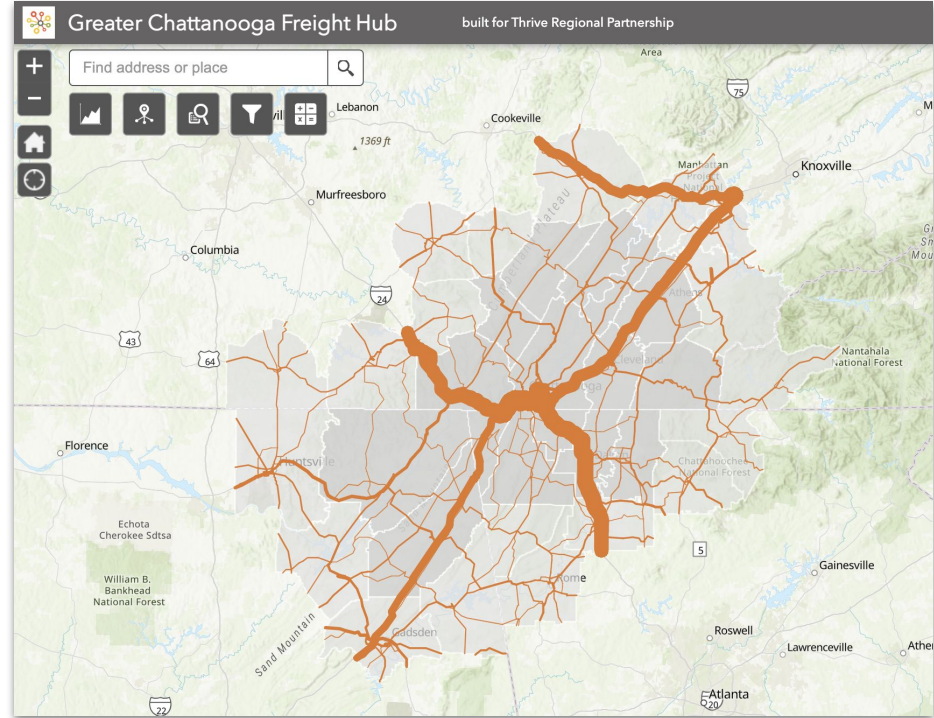
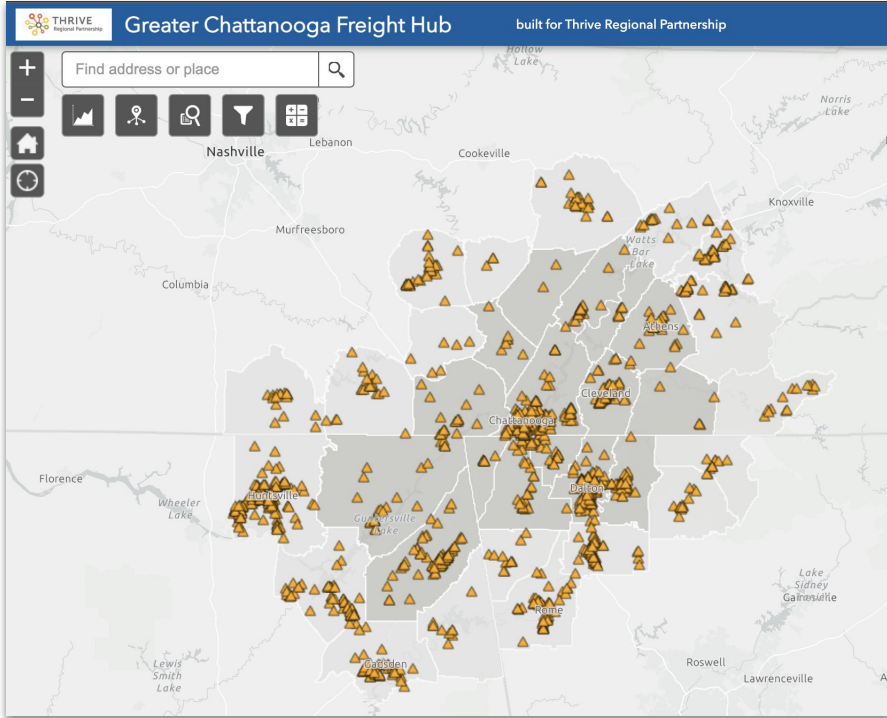
Freight through traffic, meaning it originates outside of the region without destination within the region

39 million

Tons of freight per year is projected to flow through the Chattanooga urban area alone by 2035

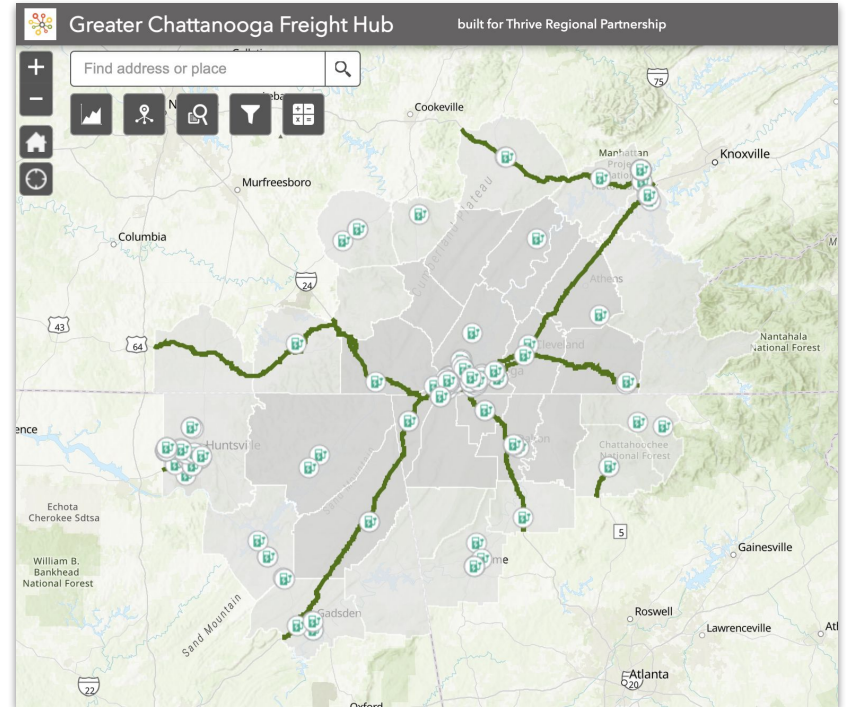


Freight Generators



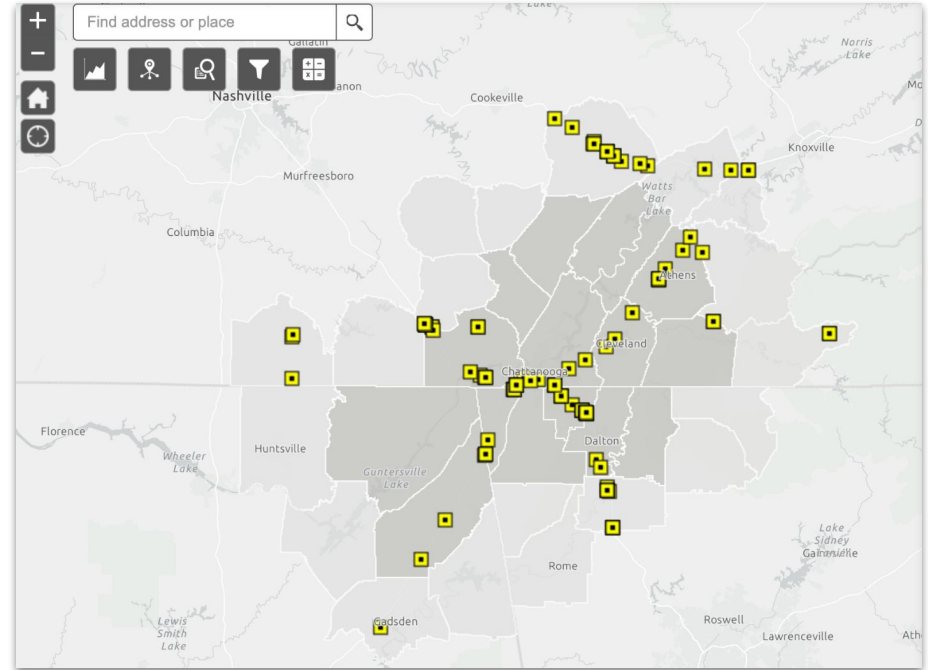
Electric Vehicle Infrastructure

- Primary consumer concerns are range of EVs and a reliable charging infrastructure
- 164 public & private electric vehicle charging stations
- Street address, access hours, type of charger, pricing



Truck Parking: Availability

- Drivers cite congestion & truck parking as biggest issues
- 64 public & private truck parking facilities
- Location, phone number, parking spaces, diesel lanes, internet access, shower facilities, laundry



Truck Parking: Existing Study Results



Current **shortage anticipated to grow** with future growth of truck parking demand.



Truck parking issues lead to other economic, safety, infrastructure, and quality of life **impacts felt by communities and businesses.**



Truck parking expansion faces **challenges related to public opposition.**

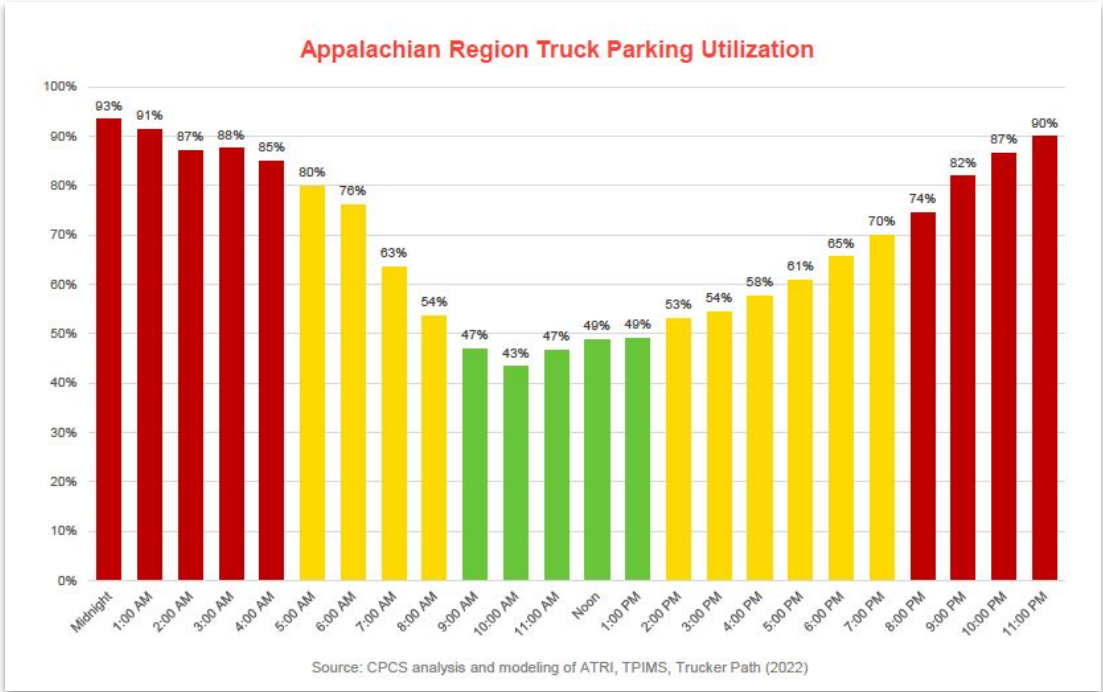


Regional solutions require significant coordination across many jurisdictions and stakeholders.



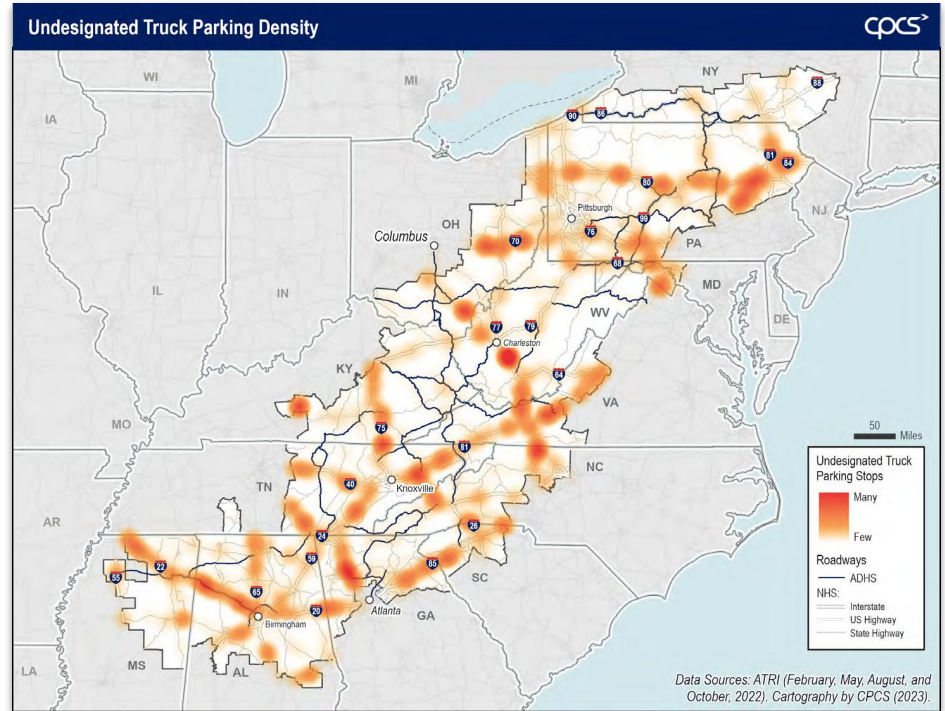
Truck Parking: Demand Trends

Truck parking utilization in the region is the highest during the overnight hours.



Truck Parking: Needs and Issues

- Not enough spaces and locations are the top concern
- Lack of truck parking on major truck routes and Interstates
- Safety issues caused by lack of truck parking
- Imbalance of amenities and number of spaces
- Increased demand around anticipated future development



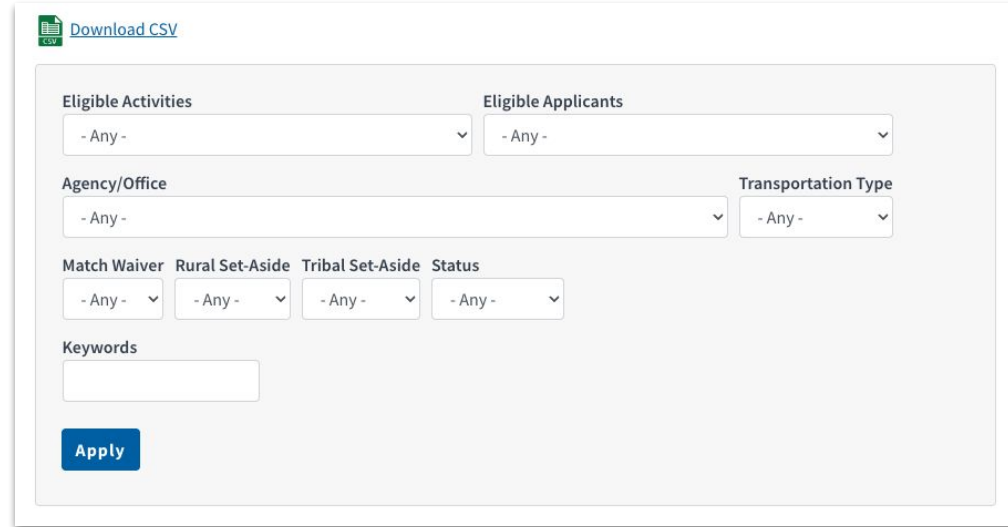
Truck Parking: Opportunities

- Public-private partnerships
- Identify existing rest areas with additional space
- Consider truck parking when approving/building warehousing and truck-intensive facilities
- Update zoning to allow truck parking
- Help destigmatize truck drivers
- Consider utilizing old toll houses and vacant factory lots for truck parking
- TPIMS to inform truckers of availability
- Coordinate with NEVI Initiatives



USDOT Grants Dashboard

- 90+ grant programs
- DOT & Non-DOT Agencies
- Multiple search filters
- Custom features for Rural & Tribal communities
- Search results as Excel .csv file



The screenshot shows the USDOT Grants Dashboard search interface. At the top left, there is a "Download CSV" button with a CSV icon. Below this, the search filters are organized into several sections:

- Eligible Activities:** A dropdown menu currently set to "- Any -".
- Eligible Applicants:** A dropdown menu currently set to "- Any -".
- Agency/Office:** A dropdown menu currently set to "- Any -".
- Transportation Type:** A dropdown menu currently set to "- Any -".
- Match Waiver:** A dropdown menu currently set to "- Any -".
- Rural Set-Aside:** A dropdown menu currently set to "- Any -".
- Tribal Set-Aside:** A dropdown menu currently set to "- Any -".
- Status:** A dropdown menu currently set to "- Any -".
- Keywords:** A text input field.

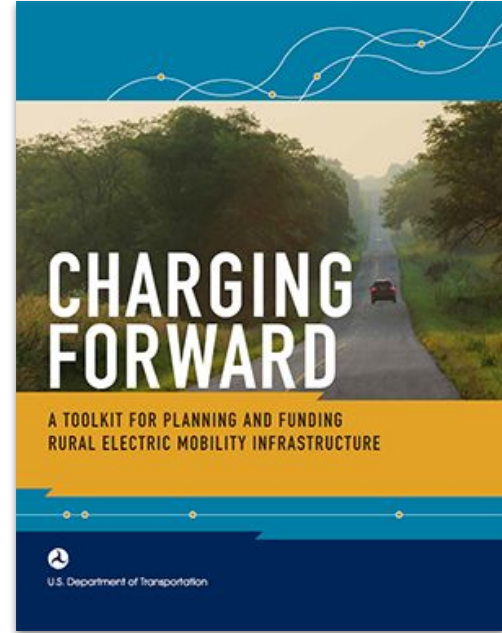
At the bottom left of the search area, there is a blue "Apply" button.

<https://www.transportation.gov/grants/dashboard>



Rural EV Infrastructure Toolkit

- Electric Vehicle Basics
- Benefits & Challenges of Rural Vehicle Electrification
- Partnership Opportunities
- Grant & Loan Opportunities
- Planning Tools & Resources
- Rural Success Stories

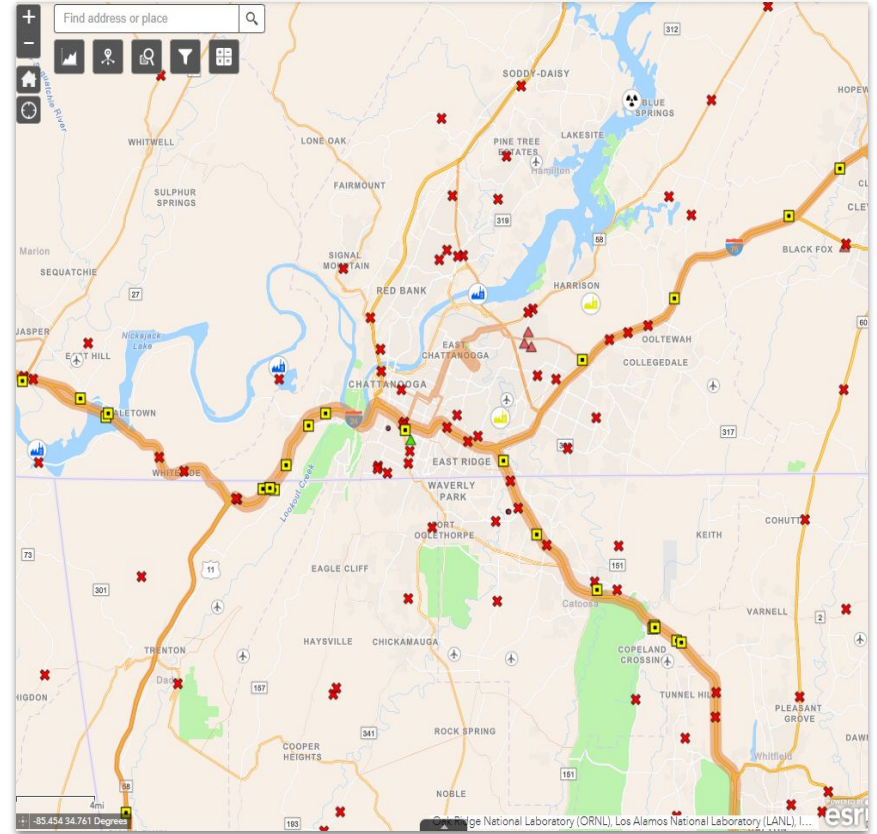


<https://www.transportation.gov/rural/ev/toolkit>



What's Next?

- Track collaborative freight mobility benchmarks
- Data updates
- Build additional GIS tools
- Assist communities in identifying projects of significance



Thank you!

Learn more at thriveregion.org



THRIVE
Regional Partnership